



WHITEPAPER

# Procurement spend intelligence, live from S/4HANA.

How procurement and finance leaders gain a single, always-current view of spend on SAP BTP — with no ETL pipeline, no data replication, and no additional SAP licence.

SAP S/4HANA 2022+

S/4HANA Cloud Public Edition

Runs on SAP BTP

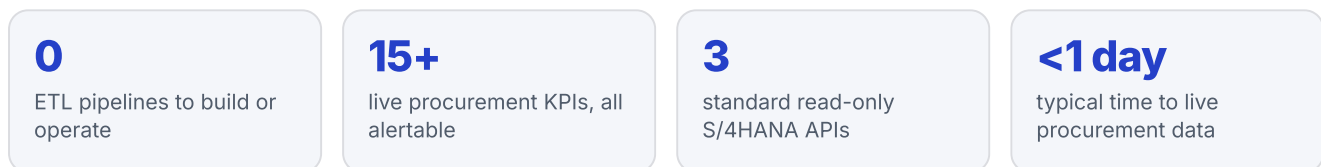
Read-only

## EXECUTIVE SUMMARY

# The data is already in S/4HANA. Getting to it takes effort.

Procurement leaders already own the data they need — purchase orders, supplier invoices, open commitments, overdue payables. It lives in SAP S/4HANA. The problem is not capturing spend; it is **seeing it**: consolidating it into one current view without a month-long BI project.

**ASAPIO Spend Lens** is a free application that runs on your existing SAP Business Technology Platform (BTP) and reads procurement data directly from standard S/4HANA interfaces. There is no ETL pipeline, no data warehouse to build, no data replication out of your landscape, and no additional SAP licence. Teams can have live procurement KPIs in view within a day — and use that baseline to catch exposure early, compare spend across the group in one currency, and act before month-end.



## THE CHALLENGE

# Spend visibility usually means a project

A consolidated procurement overview typically means running multiple transactions, exporting to Excel, and assembling the picture by hand — repeated every reporting cycle, and stale the moment it is finished.

The alternative has traditionally been heavier still: a separate BI tool, a data warehouse, or a custom ABAP report. Each adds cost, latency, and another copy of your data to govern.

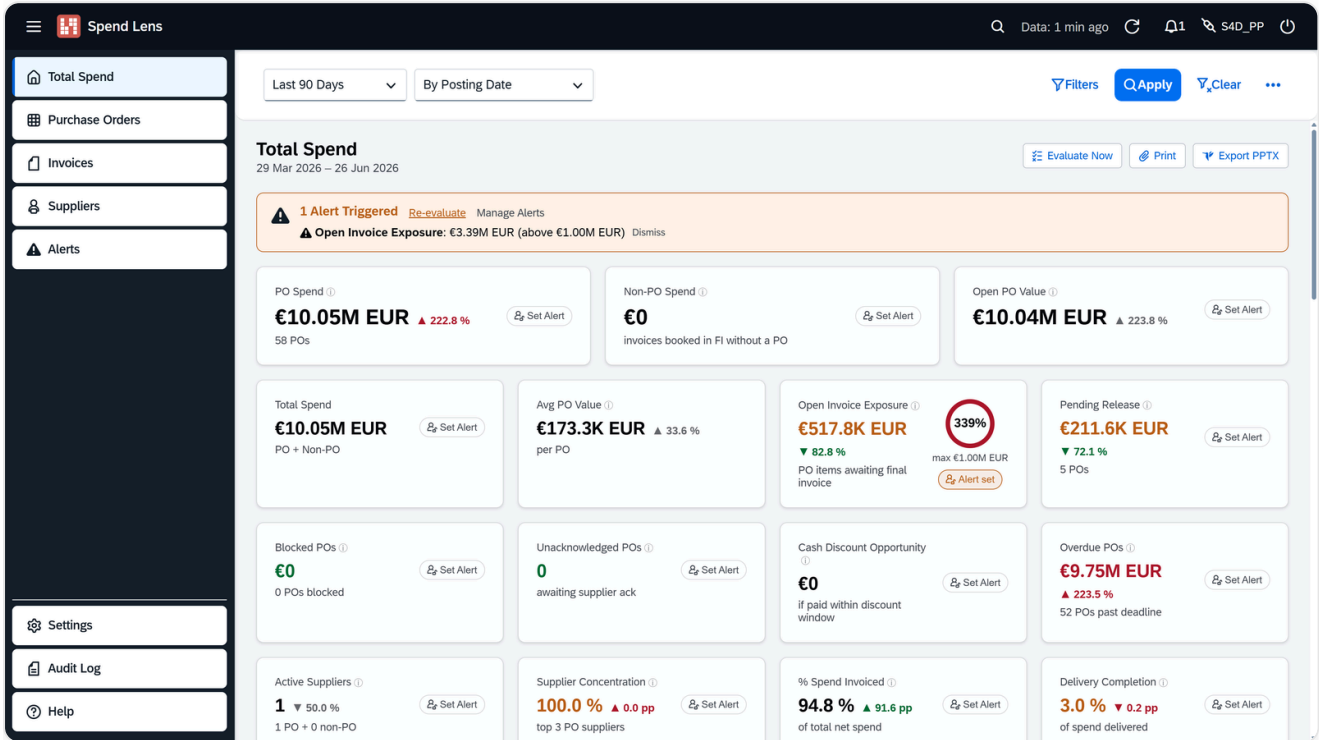
Meanwhile the operational signals that matter most to a CPO or finance director — open PO exposure, overdue purchase orders, payment-blocked invoices, supplier concentration — are all present in S/4HANA, but scattered across screens and reports.

Spend Lens brings them together in one view, read directly from the source and refreshed continuously.

THE SOLUTION

# One live view of procurement spend

Spend Lens combines PO commitment and non-PO invoice spend into a single dashboard, with a scope toggle for Both / PO Spend / Non-PO Spend and more than fifteen secondary KPIs. Every metric is alertable, so exposure surfaces the moment it crosses a threshold you define.



Total Spend Dashboard — PO spend, open PO value, open-invoice exposure and 15+ live KPIs, each with a click-to-set alert.

## BUSINESS VALUE

# Turn S/4HANA data into decisions — not spreadsheets

### See total spend in one place

PO commitment and non-PO invoice spend, combined and live. No more stitching transactions together in Excel.

### Catch exposure before it hurts

Open PO value, overdue POs, blocked invoices and open-invoice exposure surfaced automatically — with threshold alerts on any KPI.

### Compare across the whole group

Every currency converted to one display currency at live ECB rates — compare vendors, company codes and regions without manual conversion.

### Live in a day, not a project

Deploys on your existing BTP subaccount and reads standard S/4HANA APIs. No ETL, no data warehouse, no S/4HANA changes.

### No licence, no lock-in

Free from ASAPIO, read-only, and never writes back to S/4HANA. Data stays inside your own BTP landscape.

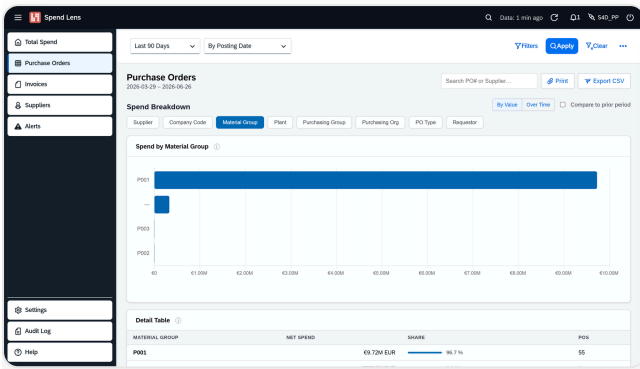
### Governed and auditable

SAP BTP authentication, role-based access, and an immutable audit log of every configuration change and connection test.

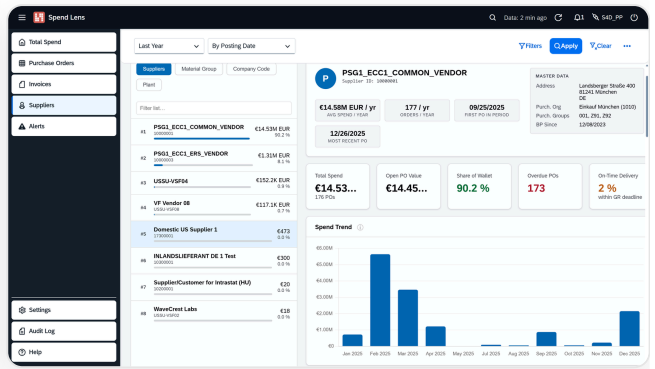
## CAPABILITIES

# What Spend Lens covers

Capability	Description
<b>Total Spend Dashboard</b>	Combined PO commitment and non-PO invoice spend. Primary tiles (PO Spend, Open PO Value, Non-PO Spend, Total Spend) plus 15+ secondary KPIs. All metrics alertable.
<b>Purchase Orders</b>	Full PO list filtered by All, Overdue, Pending Release, Unacknowledged, Blocked or Not Invoiced. Spend-by-dimension drill-down and CSV export.
<b>Invoices</b>	Total invoice spend, PO-backed vs non-PO ratio, payment-blocked invoices, credit memos and top vendors.
<b>Supplier Profiles</b>	Ranked suppliers with spend trend, share of wallet, on-time delivery and a master-data fact sheet (addresses, contacts, purchasing orgs).
<b>Spend Alerts</b>	Upper and lower threshold alerts on any KPI, with configurable periods and a breach history with retention policy.
<b>Global Display Currency</b>	Report all amounts in one currency using live ECB reference rates or manual rates — no "mixed currency" totals.
<b>Deep Links to S/4HANA</b>	Clickable PO numbers open the document directly in S/4HANA via SAP WebGUI or Fiori Launchpad.
<b>Export &amp; Audit</b>	One-click PPTX decks and CSV exports of any filtered view, plus an immutable audit log with field-level diffs.



Drill spend by material group, plant, company code or supplier — in place.

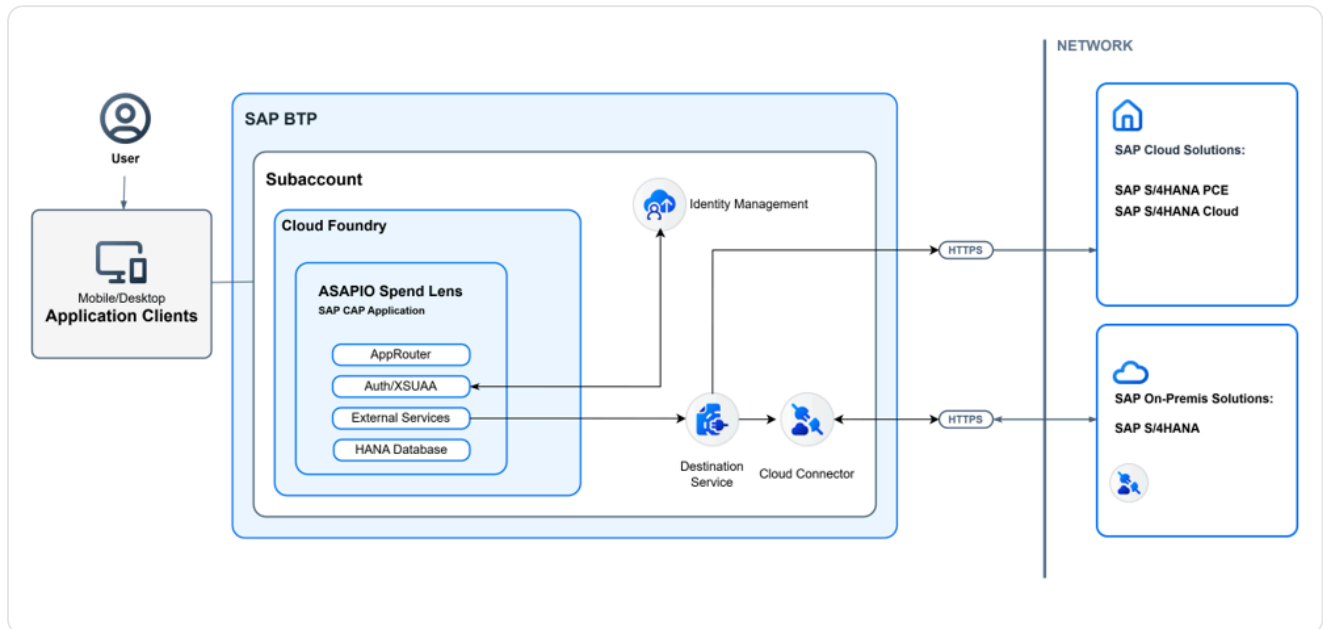


Supplier profiles with ranking, spend trend and a master-data fact sheet.

## HOW IT WORKS

# Runs in your existing SAP BTP landscape

Spend Lens runs as a SAP Cloud Application Programming Model (CAP) application on SAP BTP Cloud Foundry. It reads from standard S/4HANA procurement interfaces with no custom development and no modifications to your S/4HANA system. It supports SAP S/4HANA 2022+ (on-premise / private cloud) and S/4HANA Cloud Public Edition.



Spend Lens on SAP BTP, connecting to S/4HANA On-Premise (via Cloud Connector) or S/4HANA Cloud.

## Three standard, read-only APIs

SAP API	Protocol	Used for
<a href="#">API_PURCHASEORDER_2</a>	OData v4	Total Spend Dashboard, Purchase Orders
<a href="#">API_SUPPLIERINVOICE_PROCESS_SRV</a>	OData V2	Invoices, combined spend
<a href="#">API_BUSINESS_PARTNER</a>	OData V2	Supplier profiles (master data, contacts)

All three APIs share the same BTP destination. Field-value authorizations are respected — Spend Lens shows only data the SAP user is authorized to read.

### ZERO-RISK BY DESIGN

#### No installation

Deploys on your existing BTP subaccount. Nothing is installed on your S/4HANA systems.

#### No data replication

Data is cached locally in HANA within your own BTP subaccount. Nothing leaves your landscape; incremental loading protects the S/4HANA APIs.

#### No extra licence

No additional licence from ASAPIO. Standard BTP running costs apply.

#### Read-only & governed

SAP BTP (XSUAA) authentication, role-based access, and a full audit log. Spend Lens never writes back to S/4HANA.

FROM BASELINE TO ROADMAP

## The dashboard is the starting point

Spend Lens is free because it proves, quickly and concretely, what extending S/4HANA on BTP can unlock. Once the value is visible, ASAPIO helps you establish it in your organisation and scale it into your own KPI- and AI-driven application landscape.

### 01 · Prove the value fast

We set up Spend Lens so your team experiences S/4HANA extension in real business scenarios — building confidence in the platform and in ASAPIO as your partner.

### 02 · Establish your KPI foundation

We operationalise the app with your own KPIs, governance model and adoption plan — as-is, or evolved into a tailored analytics experience.

### 03 · Scale into custom apps & AI

Consulting, custom app development and AI use cases built around your process realities on SAP BTP.

## Free to use. Deployment help when you want it.

### Free App

Deploy it yourself on an existing BTP subaccount using our full documentation.

- ✓ All KPIs, dashboards, alerts & exports
- ✓ Global currency conversion (ECB rates)
- ✓ Standard BTP services & S/4HANA interfaces
- ✓ Complete setup documentation

### Guided Deployment — €950 fixed fee (excl. VAT)

Prefer we handle it? Expert remote deployment, completed within a two-day timeframe.

- ✓ Everything in Free App
- ✓ Remote deployment by ASAPIO experts
- ✓ S/4HANA connection validated
- ✓ Team walkthrough of the configuration

## Bring your procurement spend into focus.

Request your free licence, or talk to ASAPIO about guided setup, custom KPI apps, and AI use cases on SAP BTP. The first conversation is at no cost.

Get in touch: [asapio.com/spendlens-app](https://asapio.com/spendlens-app) · [asapio.com](https://asapio.com)

---

About ASAPIO — ASAPIO GmbH is a global SAP consulting firm specialising in S/4HANA, Ariba, Fieldglass and BTP integration, building AI-powered and automated solutions for SAP procurement teams.

SAP, S/4HANA, SAP Fiori and SAP BTP are trademarks or registered trademarks of SAP SE (or an SAP affiliate) in Germany and other countries. ASAPIO Spend Lens is an independent product of ASAPIO GmbH and is not affiliated with, endorsed by, or sponsored by SAP SE. Guided-deployment pricing (€950 fixed fee) is exclusive of German VAT and offered to business customers (B2B) only, subject to ASAPIO's Terms & Conditions. © 2026 ASAPIO GmbH. All rights reserved.